

100% BIODEGRADABLE! • SAFE TO HANDLE! • SAFE ON EQUIPMENT! • NSF/ANSI 60 CERTIFIED!

RYDLYME®

TANKLESS WATER HEATER CLEANING KIT



SAFELY CLEAN IN
LESS THAN
30 MINUTES!



RTK 350



GET RYD OF DEPOSITS & SAVE MONEY!

Mineral deposits can accumulate rapidly in your tankless water heater robbing you of heating efficiency and money each month. By periodically cleaning your tankless water heater with **RYDLYME Biodegradable Descaler**, you can keep it operating at peak efficiency and reduce heating and water costs, as well as extend the life of your unit!

The **RYDLYME Tankless Water Heater Cleaning Kit (RTK)** is the fast, effective and safe solution for maintaining your tankless water heaters. By utilizing **RYDLYME**, the "World's Leading Biodegradable Descaler," you can resolve your tankless water heater scaling issues **IN LESS THAN 30 MINUTES!**

DID YOU KNOW?

Just a 1/16" of water scale can increase energy use by more than 10%!

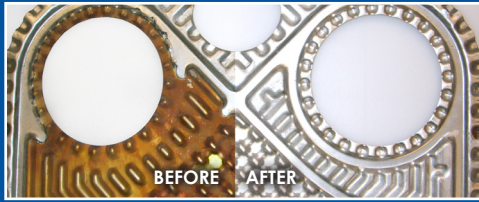
ALL-IN-ONE KIT FOR TWO CLEANINGS!

The **RTK** provides you with all the necessary equipment and materials, including two bottles of **RYDLYME** for TWO tankless water heater cleanings! Just pour **RYDLYME** and water into the bucket, connect the hoses to your tankless water heater, turn on the pump and circulate. It's that simple!

THE RTK INCLUDES:

- 5 GALLON CIRCULATION BUCKET
- 5.8 GPM SUBMERSIBLE PUMP
- (2) 6-FOOT HOSES
- (1) MOUNTING CLAMP
- (2) QUARTS OF **RYDLYME BIODEGRADABLE DESCALER**





WHAT IS RYDLYME?

RYDLYME Biodegradable Descaler is a scientific liquid descaler specifically designed to dissolve water scale, lime, mud, rust and other mineral deposits. For over 70 years, **RYDLYME** has been trusted and successfully utilized in commercial, residential, institutional and governmental facilities!



WHY RYDLYME?

- 100% BIODEGRADABLE WITHOUT NEUTRALIZATION!
- NON-HAZARDOUS!
- SAFE TO HOLD IN YOUR HAND WITHOUT INJURY!
- FAST-ACTING!
- SAFE ON METALS & MATERIALS FOUND IN WATER-OPERATED EQUIPMENT!
- NSF/ANSI 60 CERTIFIED FOR USE IN POTABLE SYSTEMS!
- SAFE TO DISPOSE DOWN NORMAL DRAINS & SEWERS!



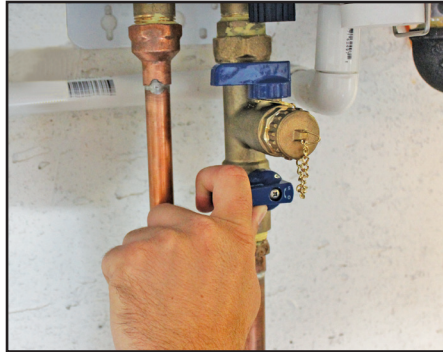
GET MORE RYDLYME!

RYDLYME is available in various sizes:

- 1 quart singles or cases
- 1 gallon jug or cases
- 5 gallon jugs
- Contact us for additional sizes!

QUICK & EASY TO USE!

With a few connections, quart of **RYDLYME**, water and a little bit of time, you can have a clean tankless water heater! For more information on the **RTK** and complete cleaning procedures, please visit our website at www.apexengineeringproducts.com. For pricing or distribution opportunities, please call us at 800.451.6291 or 630.820.8888.



1. TURN OFF GAS & TURN ALL VALVES TO PROPER POSITIONS.



2. POUR RYDLYME & WATER INTO THE 5 GALLON RTK BUCKET.



3. CONNECT HOSES TO APPROPRIATE HOT & COLD SERVICE VALVES.



4. PLACE PUMP INSIDE BUCKET, TURN ON PUMP & CIRCULATE.



5. FLUSH UNIT, DISCONNECT HOSES & RETURN UNIT TO SERVICE.



6. DISPOSE SOLUTION DOWN NORMAL DRAIN OR SEWER.

For complete **RTK** cleaning procedures or more information, please visit our website at www.apexengineeringproducts.com.

REV0614



An ISO 9001:2008 Certified Company

1241 SHORELINE DRIVE • AURORA, ILLINOIS 60504
800.451.6291 • 630.820.8888

www.ApexEngineeringProducts.com